



MAST
Users
Group
Meeting

Nov 26
2012

Hubble Legacy Archive

Lee Quick

November 26, 2012



MAST
Users
Group
Meeting

Nov 26
2012

HLA news in the last year

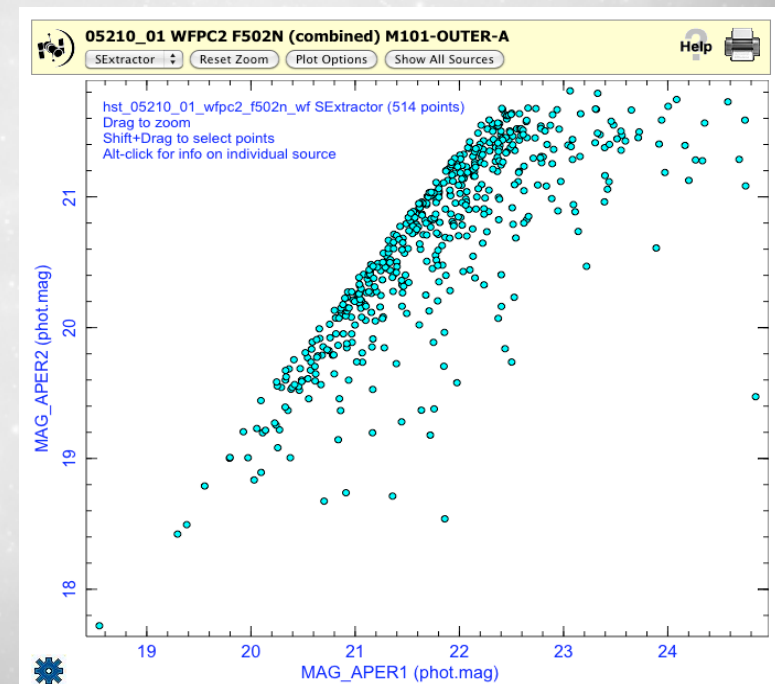
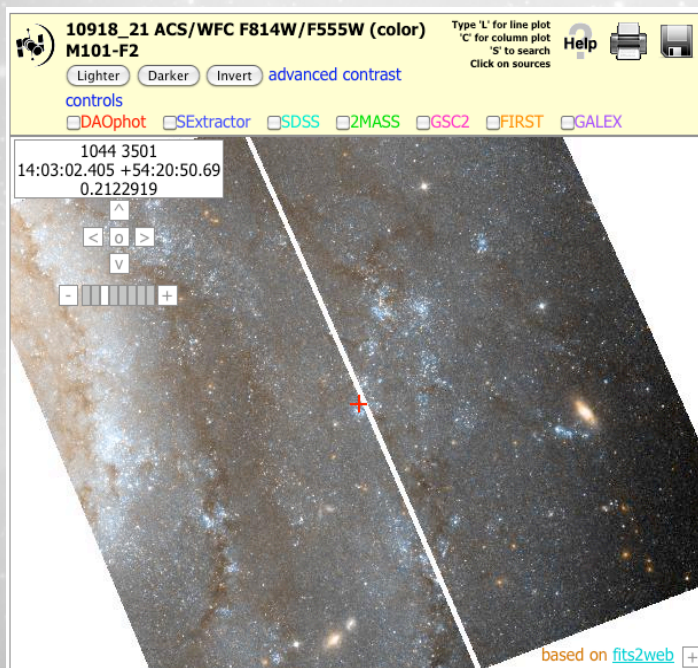
- DR6 Release (2012 January 5)
- DR7 Release (2012 November 2)
 - New interface features and capabilities
 - New data and revamped pipelines

- Staff ~ 4 FTEs

Rick White	Stefano Casertano
Niall Gaffney	Lee Quick
Michael Wolfe	Steve Lubow
Mark Kyprianou	Brian McLean
Rachel Anderson	Kevin Lindsay

New interface capabilities

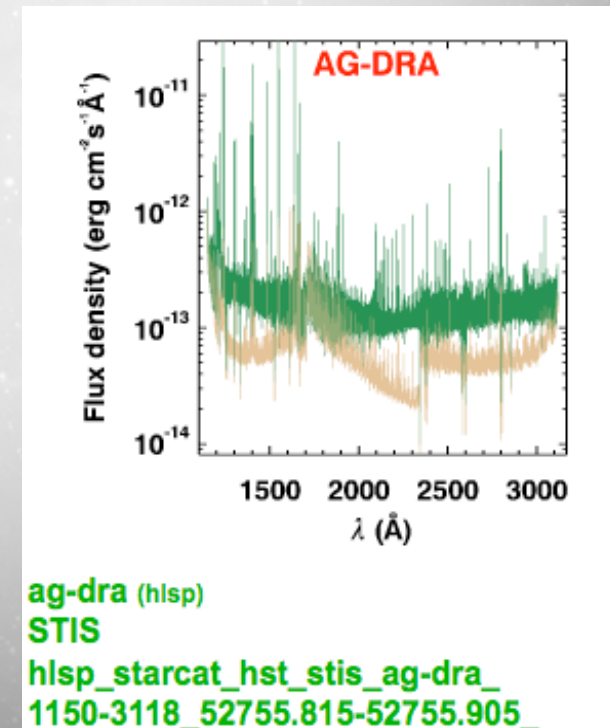
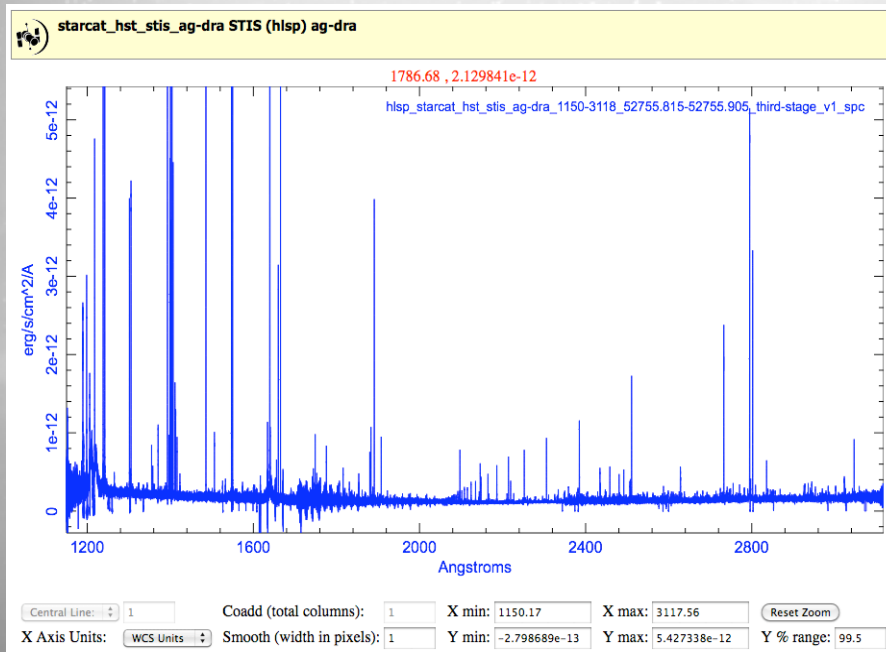
- Interactive display enhancements including JPEG save option
- Inventory and images view include select all button
- HLA Simple Image Access Protocol server compliant with VO standards



- Scatter plotting tool plots properties of HLA source lists

New interface capabilities, cont.

- Ability to support Spectral HSLP
 - 586 spectra from the StarCAT project
 - New line plotting tool – HTML5/Canvas
 - Interactive display accepts spectra



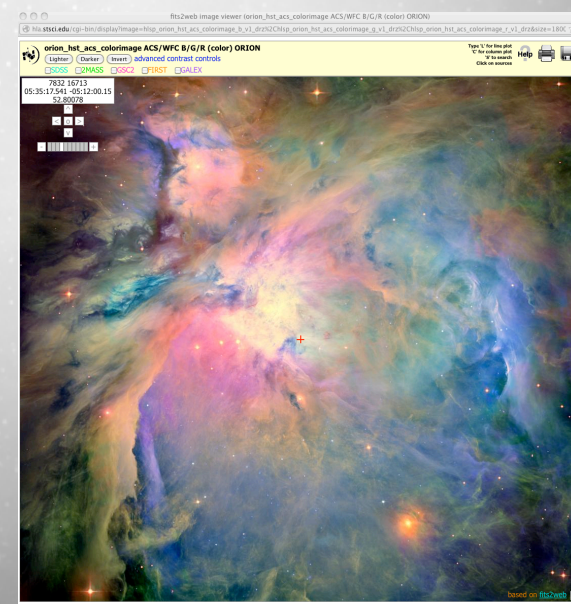
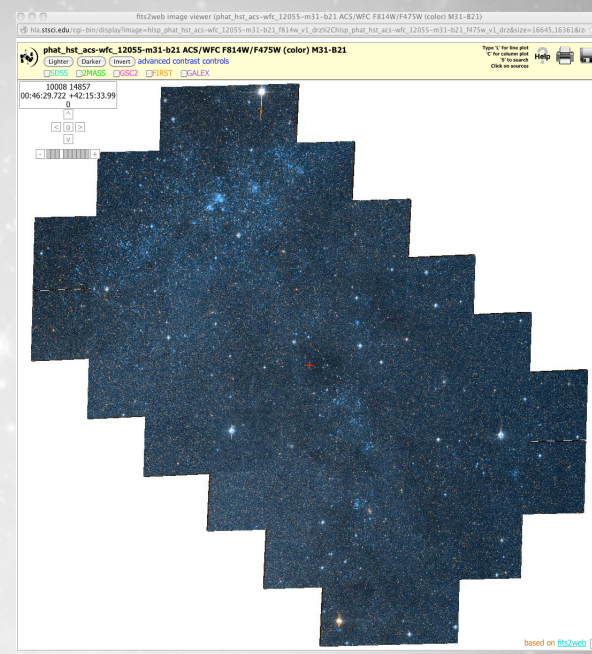


MAST
Users
Group
Meeting

Nov 26
2012

New Data

- Additional ACS (updated to release date 2-16-2011), WPFC2 and NICMOS data
- New High Level Science Products
 - **CANDELS** (Cosmic Assembly Near-IR Deep Extragalactic Legacy Survey)
 - **CLASH** (Cluster Lensing And Supernova survey with Hubble)
 - **PHAT** (The Panchromatic Hubble Andromeda Treasury)
 - **HIPPIES** (Hubble Infrared Pure Parallel Imaging Extragalactic Survey)
 - **HUD09** (Hubble Ultra Deep field 2009)
 - **ORION** (The HST survey of the Orion Nebula Cluster)
 - **BORG** (Brightness of Reionizing Galaxies Survey)
 - **GHOSTS** (ACS Nearby Galaxy Survey)
 - **StarCAT** (HST STIS Echelle Spectral Catalog of Star)



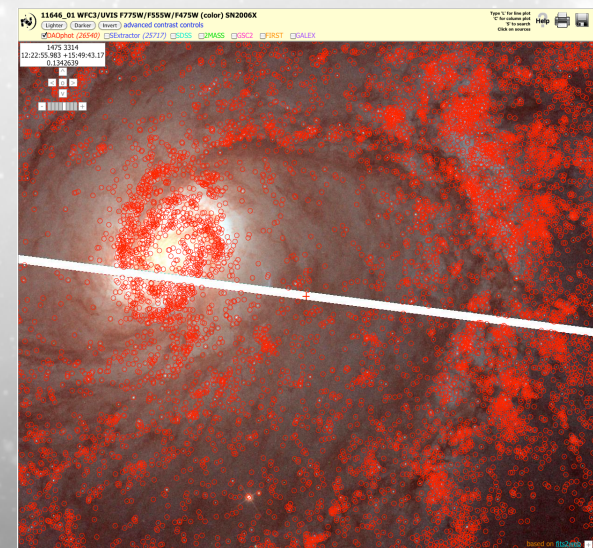
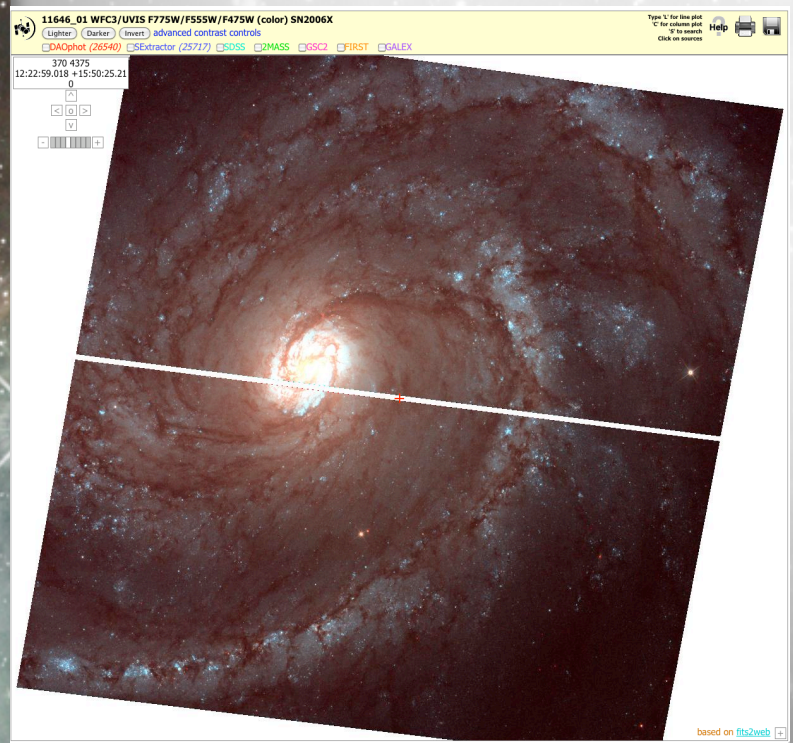
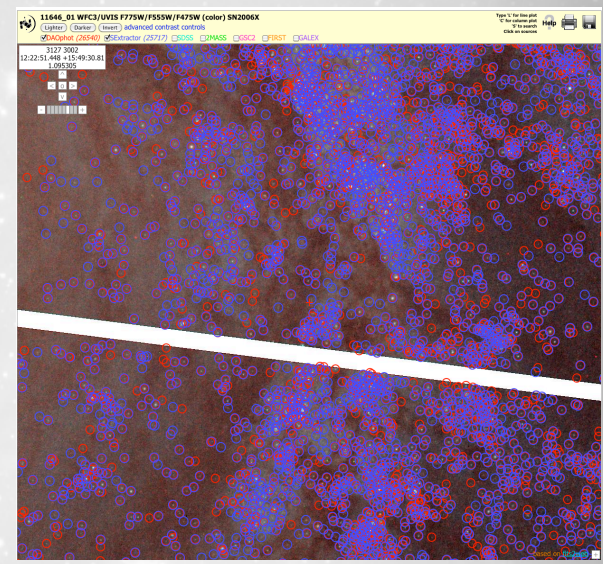


MAST
Users
Group
Meeting

Nov 26
2012

New Data

- WFC3 image data: includes ~62% of data from observations that have a release date up to 11-30-2011
- WFC3 source lists
 - DAOphot -5,201
 - Source Extractor -7,019
- New (internal) review interface for approving data





MAST
Users
Group
Meeting

Nov 26
2012

WFC3 Processing Pipeline

- Based on existing HLA pipelines (ACS, NICMOS) with structural changes
 - Integrates data processing, source list generation
 - Modular design - steps are broken into separate programming units
 - Removes STSDAS dependencies as much as possible
 - Isolate instrument dependencies into small modules
 - Designed to be extensible to mosaic generation
- Some algorithmic changes
 - New alignment module performs very well on crowded fields
 - Sky equalization included
 - More rigorous handling of header information
- WFC3 images include two additional extensions (extensions 1-3 remain unchanged)
 - Extension 4 - Exposure Time layer records the effective exposure time for each pixel
 - Extension 5 – Table that includes information on all contributing images

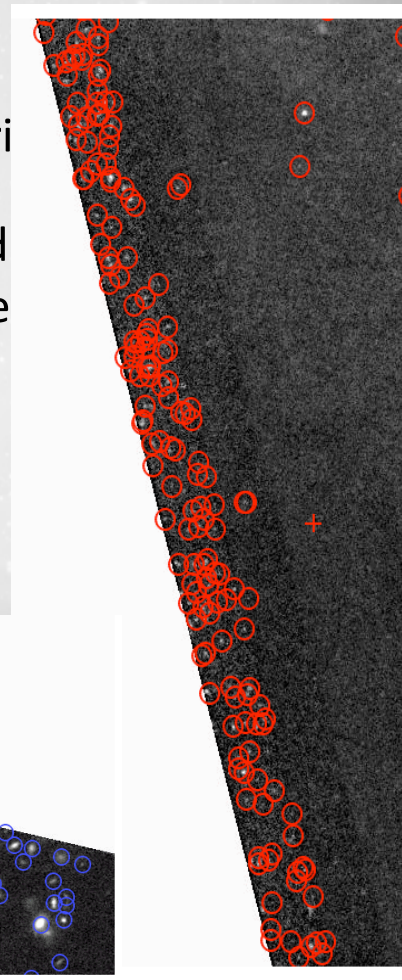
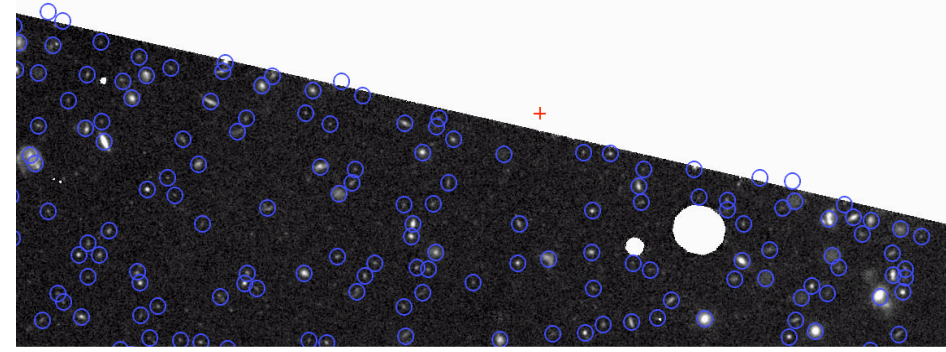
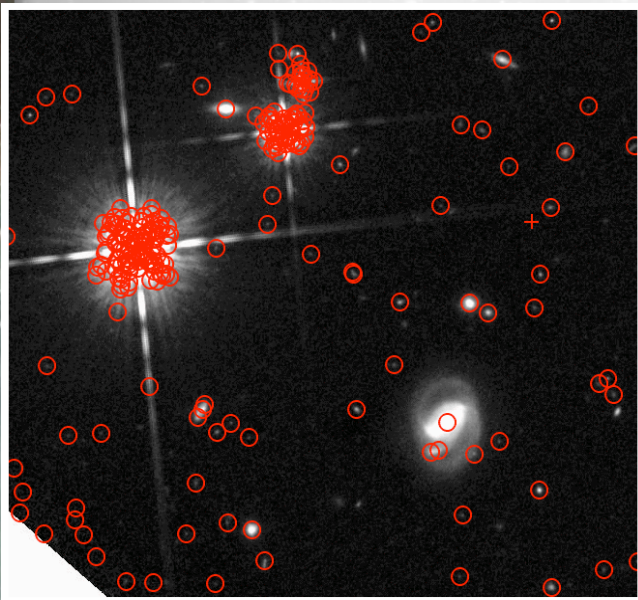


MAST
Users
Group
Meeting

Nov 26
2012

WFC3 Source list generation

- Similar to ACS source lists
- Total light image
 - Algorithm modified because sky background was not subtracted from WFC3 images
- Spatial Filters
 - Gaussian kernel for sparse images
 - Mexican hat kernel for crowded images
- Problems
 - DAOphot - number of spurious detections associated with bright stars constitute nearly half of the total source counts
 - SExtractor - detections of spurious sources near edge of valid
 - DAOphot - UVIS the edge region is affected by cosmic ray events





MAST
Users
Group
Meeting

Nov 26
2012

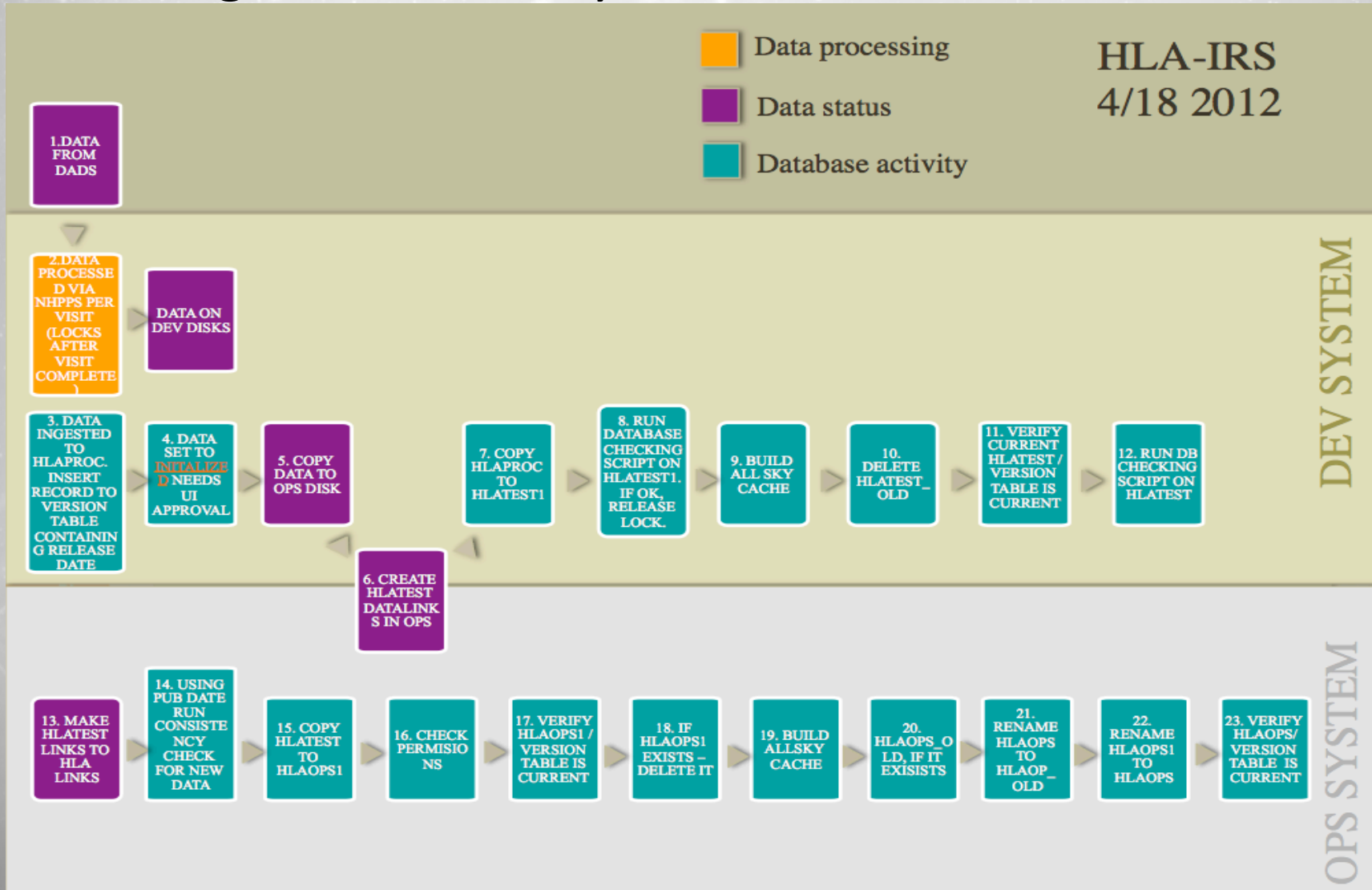
Work in progress

- WFC3 imaging pipeline
 - Inclusion of Astrodrizzle
 - Refactoring and adding Astrodrizzle functions
- WFC3 source lists flagging
 - Concentration index
 - Saturated sources
 - Detection swarms around bright stars
 - Diffraction spike detections
 - Next filtered detections, i.e. Lingering spurious edge detections



Work in progress

- IRS – Incremental Release System
 - Database development almost complete
 - Design data delivery infrastructure

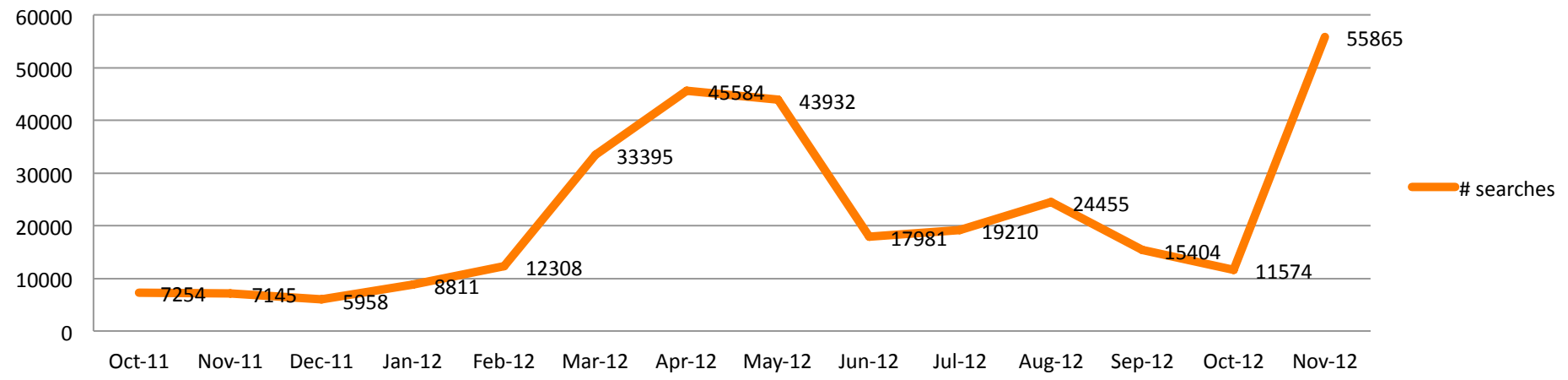




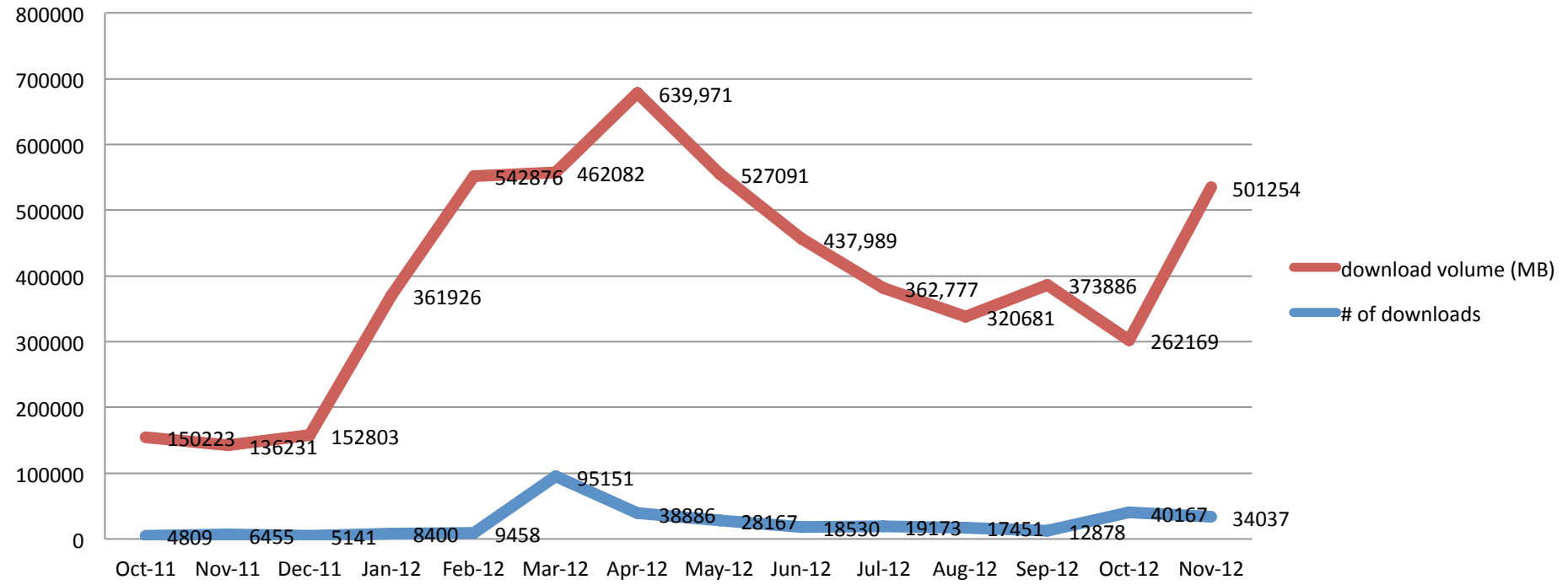
MAST
Users
Group
Meeting
Nov 26
2012

HLA stats

searches



downloads

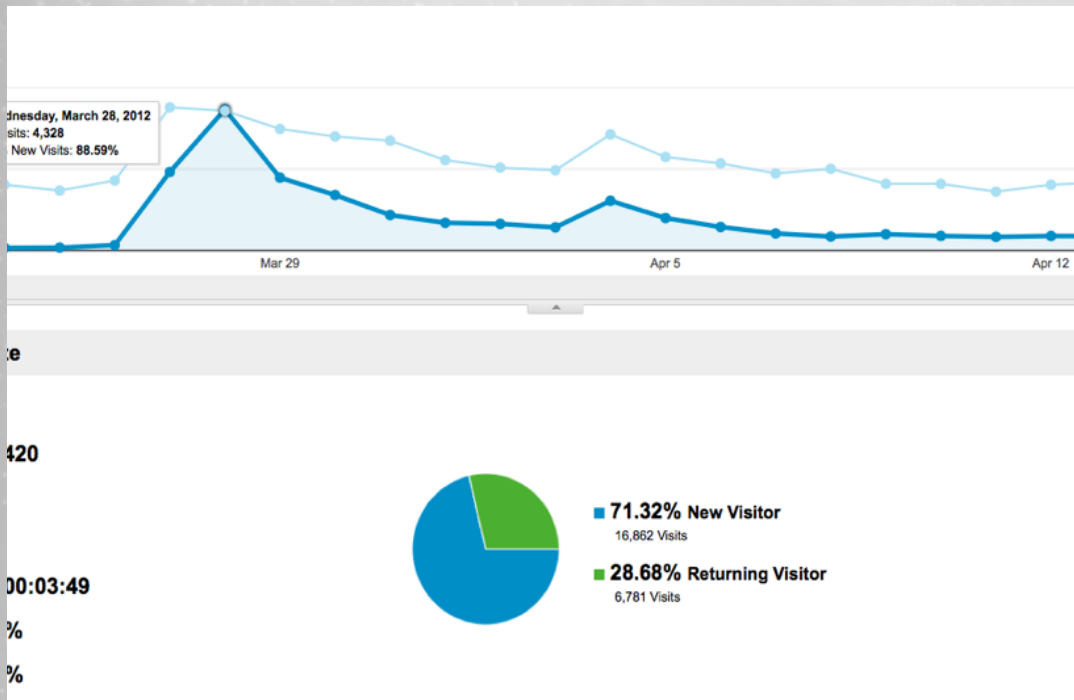




MAST
Users
Group
Meeting

Nov 26
2012

HLA stats cont.

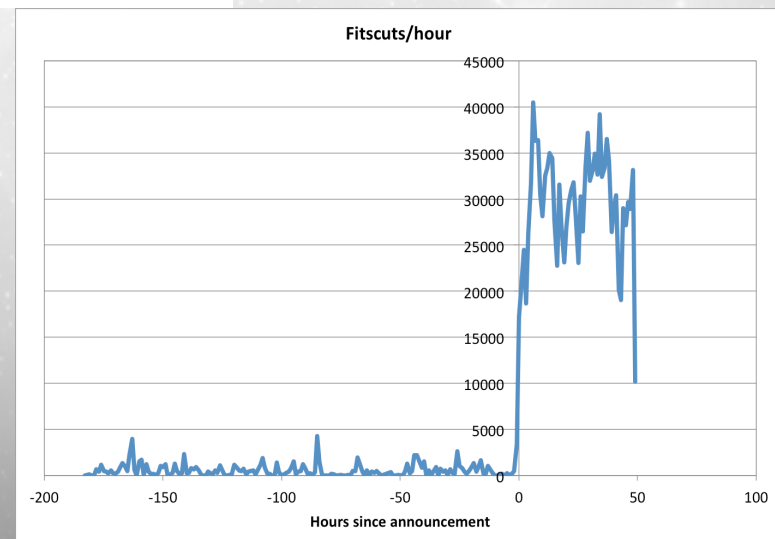


FITSCUT

~600/hour > 41,000/hour (a factor of 68)



Google Analytics
~150 hits > 4,328 hits
(factor of 28)



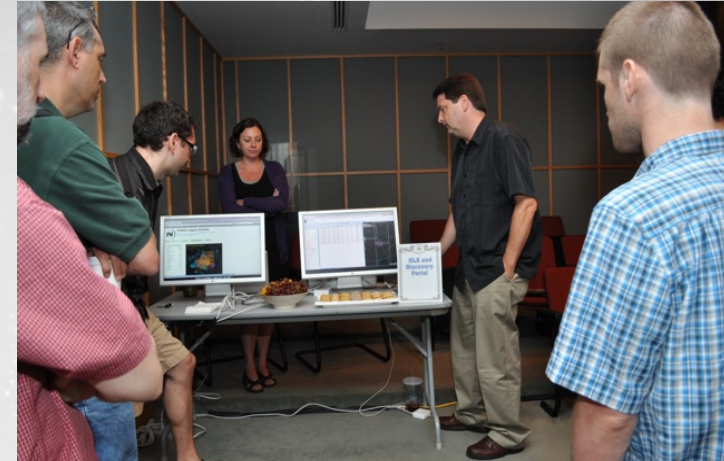


MAST
Users
Group
Meeting

Nov 26
2012

Outreach and Education

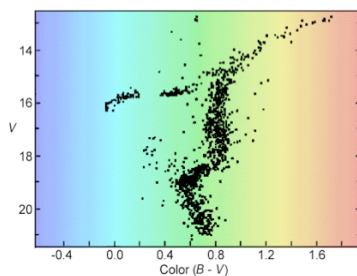
- AAS Summer/Winter Sessions
- ADASS – November 2011
- STScI Citizen Engagement Jamboree
- STScI Spectroscopy Workshop
- Educational materials now available



Age Dating Clusters in the Antennae Galaxies



Color Magnitude Diagram of M80





MAST
Users
Group
Meeting

Nov 26
2012

Future HLA

- Current and future baseline product generation
 - Process all public WFC3 data
 - Extend new WFC3 pipeline and data formats to other imaging instruments (WFPC2, ACS, NICMOS)
 - Develop robust mosaic pipeline
 - Produce mosaics for more pointings, instruments
 - Incorporate source lists and produce uniform metadata for HLSP
 - Enhance presence of spectral data in HLA
 - Include more existing products
 - Encourage teams to provide HLSP whenever possible
 - Foster development of spectral pipeline
 - Consider feasibility of WFC3 grism analysis tools
 - Develop tools to combine moving-target images



MAST
Users
Group
Meeting

Nov 26
2012

Future HLA cont.

- Other products and features
 - Produce all-sky HST catalog (see Whitmore talk)
 - Develop tools to investigate time-domain data
 - Search for solar system targets
 - Expand capabilities of image display
 - Further enhance plotting tool capabilities
 - Continue educational and outreach endeavors
- Integrate HLA interface into MAST portal
 - Ultimately portal will incorporate all HLA interface capabilities
 - Common look-and-feel for seamless navigation
 - Identify HLA services and functions to incorporate