



MAST
Users
Group
Meeting

Nov 26
2012

Kepler Archive

Dorothy Fraquelli



MAST

Users

**Group
Meeting**

**Nov 26
2012**

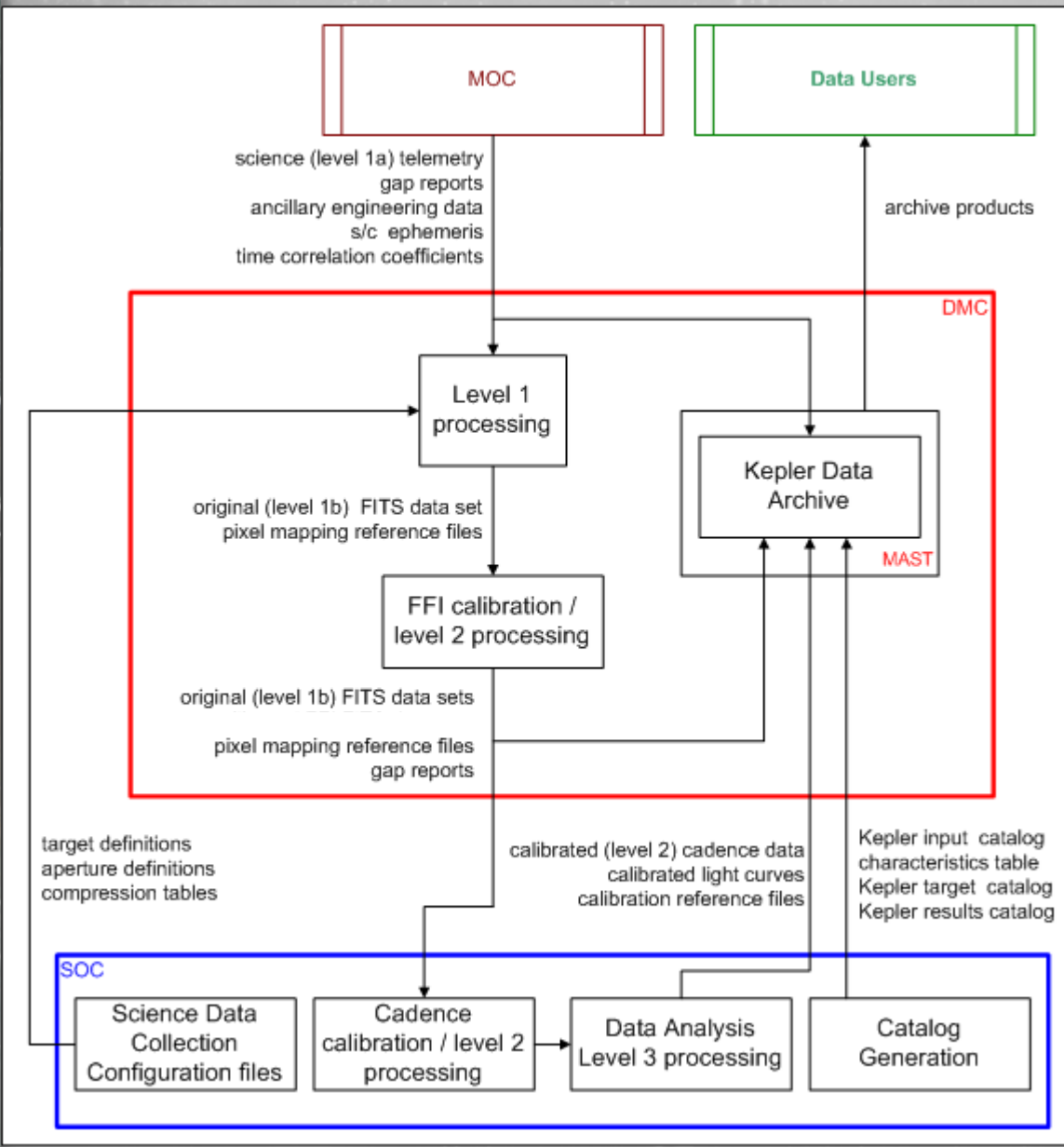
Kepler involves a number of branches and personnel at STScI. No one at STScI works full time on Kepler. Some work is done under contract with the Kepler project (i.e., the DMC) while other work is done under the MAST contract.

- Staffing for Kepler (2.1 FTE in FY 2012):
 - + from ASB: Randy Thompson, Shui-AyTseng, Tim Kimball, Karen Levay and Myron Smith
 - + from DPAS: Forrest Hamilton, Dorothy Fraquelli, Deborah Kenny, Faith Abney (lead) (Tracy Ellis, Tatjana Tomovic are backups for Hamilton)
 - + from DSB: Christine Heller-Boyer
 - + from ITSD: Tom Walker, Pat Taylor, David Unger
- The archive holds light curves, target pixel files and FFIs for quarters 0 through 13.
 - + All data are public, except for Q10-13 GO data.
 - + Q14 data are expected to arrive at the archive in January 2013.
 - + Q15 observations are in progress on the spacecraft.
- Ancillary files, many added in 2012
 - + Cotrending Basis Vectors
 - + Focal Plane Characterization Models
 - + Engineering files (long/short cadence collateral files, artifact removal pixel files, background pixel files and Reverse Clock files)
 - + Spice Kernels (ephemeris)



MAST
Users
Group
Meeting
Nov 26
2012

Data flow from Kepler → MOC → DMC (at STScI) → SOC (at Ames) → DMC → MAST



The MOC receives data from Kepler and forwards them to the DMC. The DMC formats the data (FITS), archives the level 1 data and forwards them to the SOC. These are done monthly.

The SOC processes the data, producing light curves, target pixel files and FFIs, which are sent to the DMC quarterly for archiving.

The Kepler project sends other files to the DMC for archiving, DMC use and/or MAST use. These include the KIC, KTC (quarterly), lists of dropped or published targets, aperture definitions, data release notes, and others documents.



MAST
Users
Group
Meeting

Nov 26
2012

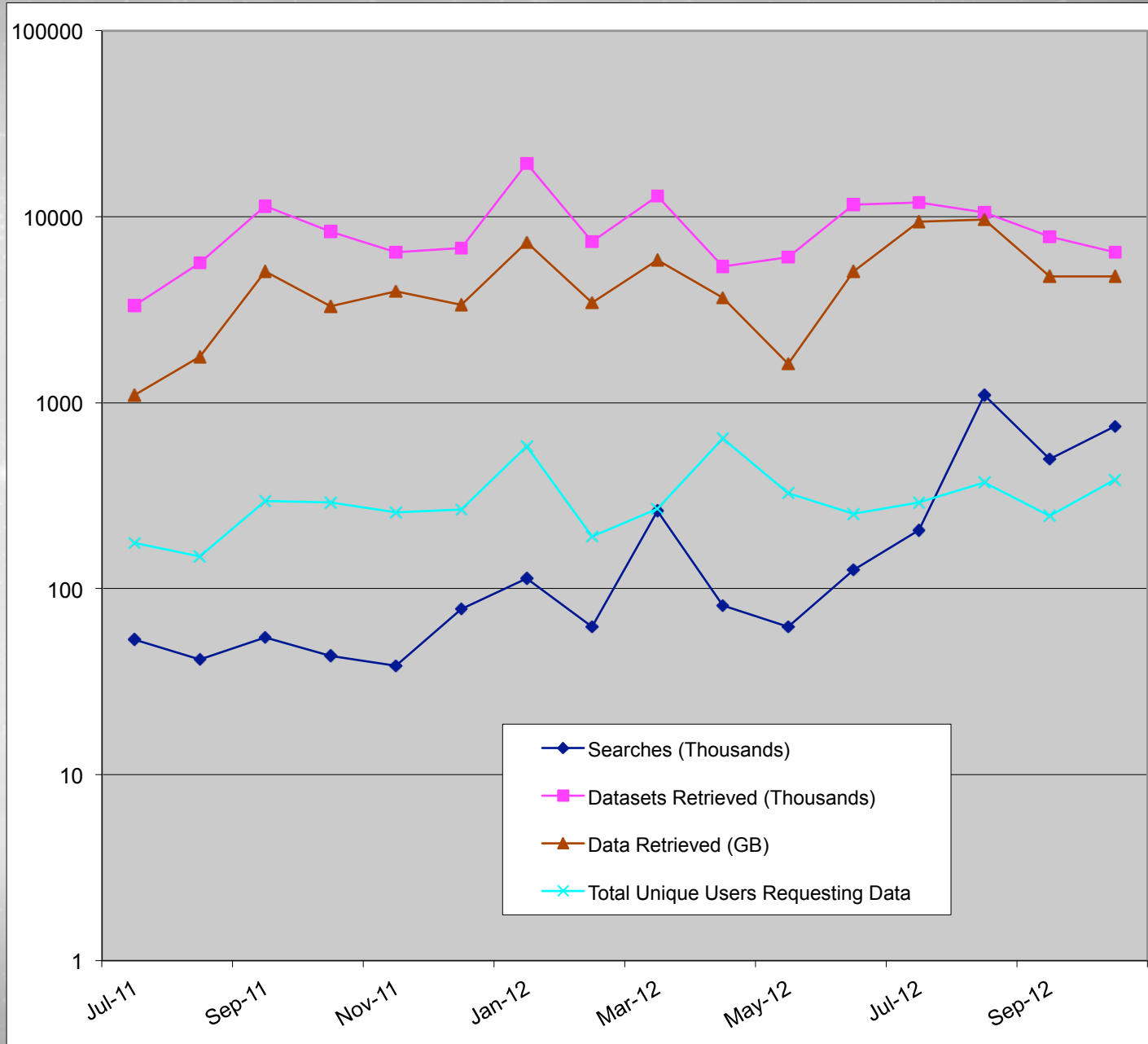
748,896
searches

6,447,300
datasets
retrieved

4,776 GB
of data
retrieved

386 unique
users

October 2012 Retrieval Statistics





MAST
Users
Group
Meeting

Nov 26
2012

- MAST provides the archive user interface for Kepler data, which consist of light curves, target pixel files, full frame images (FFI), a variety of support files and documentation.
 - + Standard MAST search forms for Target Searches, Data Discovery, FFI and Engineering Data Searches and the Kepler Input Catalog (KIC).
 - > includes a plotter to preview public light curves
 - + Direct download of CBV, Focal Plane Characteristics and Spice Kernel (ephemeris) files.
- MAST also provides a number of **value added** interfaces and services.
 - + Target search has additional magnitudes/colors from cross matches to GALEX, UKIRT project (IRT), USNOb catalog, Isaac Newton Telescope Survey (KIS), Everett KPNO Survey (UBV) and SDSS/DR9. (see next presentation)
 - + Display and direct download of FFIs
 - + Direct download of target pixel files and tar files containing light curves based on investigation id, and public data by quarter.
 - + Several VO services
 - + Casjobs (direct query of the database) and more
- MAST will house the Kepler archive after end of mission.



MAST
Users
Group
Meeting
Nov 26
2012

KEPLER Search - Mozilla Firefox

KEPLER Search | KEPLER Field Descriptions | Kepler Target Search, explanati...

Kepler Data Search & Retrieval

[Archive Status](#) [Field Descriptions](#) [\(Help\)](#)

[Standard Form](#) [File Upload Form](#)

Target Name Resolver Radius (arcmin)

Right Ascension Declination Equinox

Kepler ID Investigation ID 2Mass ID

KEP Mag Target Type Long Cadence Short Cadence Release Date

Teff Log_G Condition Flag

User-specified field 1 Field Descriptions User-specified field 2

User-specified field 3 Field Descriptions User-specified field 4

Output Columns

Mark
Kepler ID
Investigation ID
Dataset Name
Quarter

Sort By: Reverse
 Reverse
 Reverse

- All Targets
- All Targets
- Exoplanet Host Star
- Eclipsing Binary
- False Positive
- Null Kepmag
- Possible Artifact
- Red Giant
- Planetary Candidate

Select data to be plotted:

PDCsap Flux Sap Flux Both [Help](#)

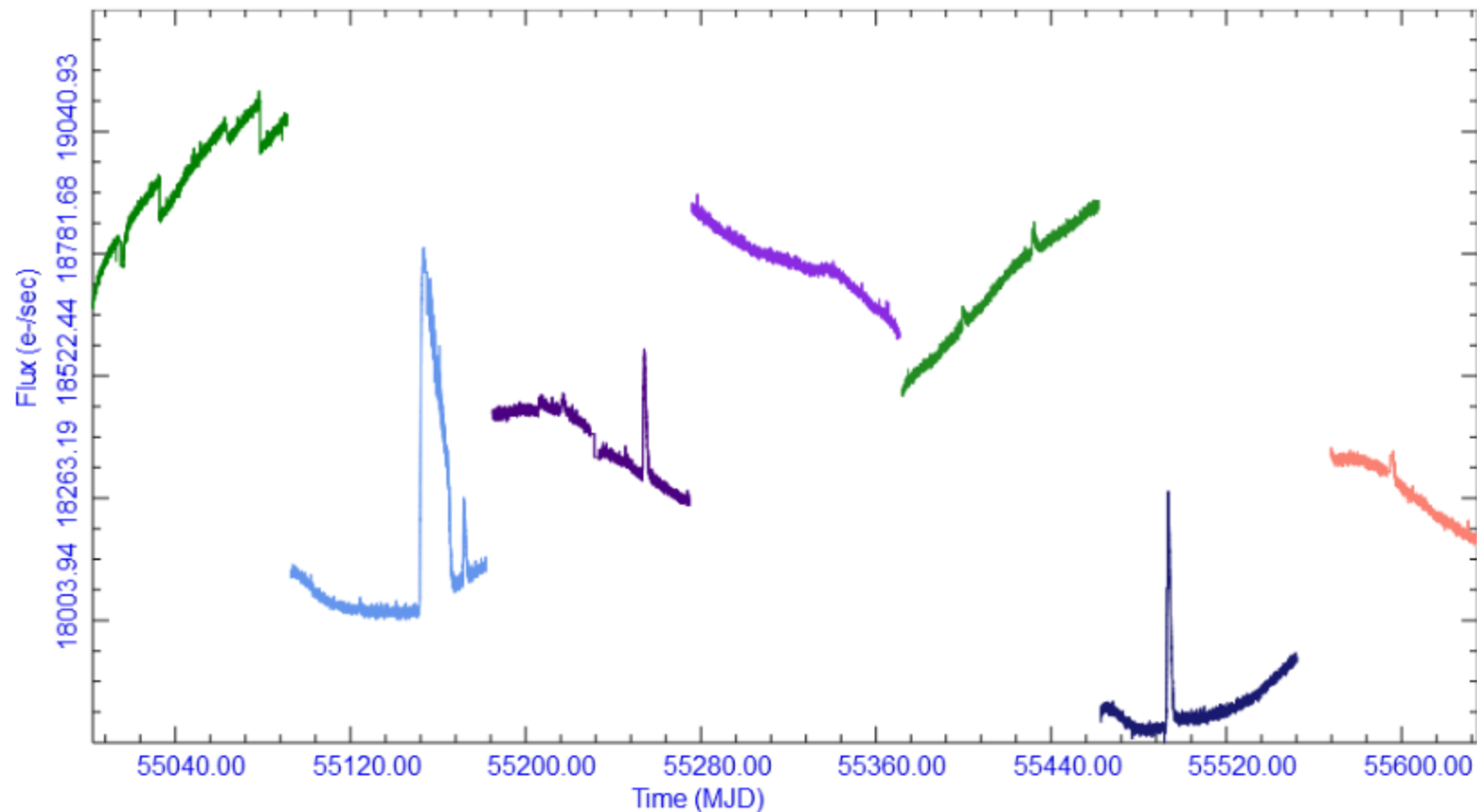
Start again

Plot range

Min Time: 55002.26 Max Time: 55634.84 Min Flux: 17744.69 Max Flux: 19300.18

scale factors (set to 0 to remove):

KPLR005438845-2009259160929: 1.00 KPLR005438845-2009350155506: 1.00 KPLR005438845-2010078095331:
1.00 KPLR005438845-2010174085026: 1.00 KPLR005438845-2010265121752: 1.00
KPLR005438845-2010355172524: 1.00 KPLR005438845-2011073133259: 1.00



Create png Image

Time , Flux = 55476.32 , 19262.16



MAST
Users
Group
Meeting

Nov 26
2012

KEPLER_FOV Search - Mozilla Firefox

KEPLER_FOV Search × KEPLER Field Descriptions × Kepler Target Search, explanati... ×

Kepler Target Search

[\(Help\)](#)
[Field Descriptions](#)

(See [Explanations](#) for more information)

[Standard Form](#) [File Upload Form](#)

<u>Target Name</u> <input type="text"/>	<u>Resolver</u> NED <input type="text"/>	<u>Radius (arcmin)</u> 0.04 <input type="text"/>
<u>Right Ascension</u> <input type="text"/>	<u>Declination</u> <input type="text"/>	<u>Equinox</u> J2000 <input type="text"/>

<u>Kepler_ID</u> <input type="text"/>	<u>Data Availability Flag</u> <input type="text"/>	<u>Teff</u> <input type="text"/>
<u>Catalogs</u> KIC Targets Only <input type="text"/> KIC Targets Only KIC + UBV + KIS Targets Targets from all Catalogs gJ_KIC_IRT <input type="text"/>	<u>Seasons on CCDs</u> any <input type="text"/>	<u>Min. Distance from Edge (px)</u> <input type="text"/>
<u>Color/Mag 2</u> NUVg_kis <input type="text"/>	<u>Value 2</u> <input type="text"/>	<u>Condition_flag</u> All Targets <input type="text"/>

<u>User-specified field 1</u> J_IRT <input type="text"/>	<u>User-specified field 2</u> gK <input type="text"/>
<u>Field Descriptions</u> <input type="text"/>	<u>Field Descriptions</u> <input type="text"/>
<u>User-specified field 3</u> JK <input type="text"/>	<u>User-specified field 4</u> gJ_KIC_IRT <input type="text"/>
<u>Field Descriptions</u> <input type="text"/>	<u>Field Descriptions</u> <input type="text"/>

<u>Output Columns</u> RA (J2000) <input type="text"/> Dec (J2000) <input type="text"/> Kepler_ID <input type="text"/>	<u>Sort By:</u> ang_sep (") <input type="text"/> <input type="checkbox"/> Reverse Kepler_ID <input type="text"/> <input type="checkbox"/> Reverse " <input type="text"/> <input type="checkbox"/> Reverse
--	--



MAST
Users
Group
Meeting

Nov 26
2012

KEPLER_FFI Search - Mozilla Firefox

KEPLER_FFI Search | KEPLER Field Descriptions | Kepler Target Search, explanati...

Kepler Full Frame Image (FFI) & Engineering Data Search

[Archive Status](#) [\(Help\) Field Descriptions](#)

[Standard Form](#) [File Upload Form](#)

Search Reset Clear Form

Archive Class Full Frame Images (FFI) | **File Name** | **Quarter**

Full Frame Images (FFI)
Long Cadence Collateral (CLL)
Short Cadence Collateral (CLS)
Artifact Removal Pixel (ARP)
Background pixel (BKG) | **Use** | **Descriptions**
Ancillary Engineering Data (ENG)
Reverse Clock (RVC)

End Time | **User-specified field 2** | **Field Descriptions**

File Name

Output Columns

- Mark up
- File Name down
- Archive Class
- Start Time
- End Time
- Archive Date remove
- Quarter reset

Sort By:

- File Name Reverse
- null Reverse
- null Reverse

Output Format

HTML_Table

Show Query Make Rows Distinct





Maximum Records: 1001

Records per Page: 100

add Mark add all



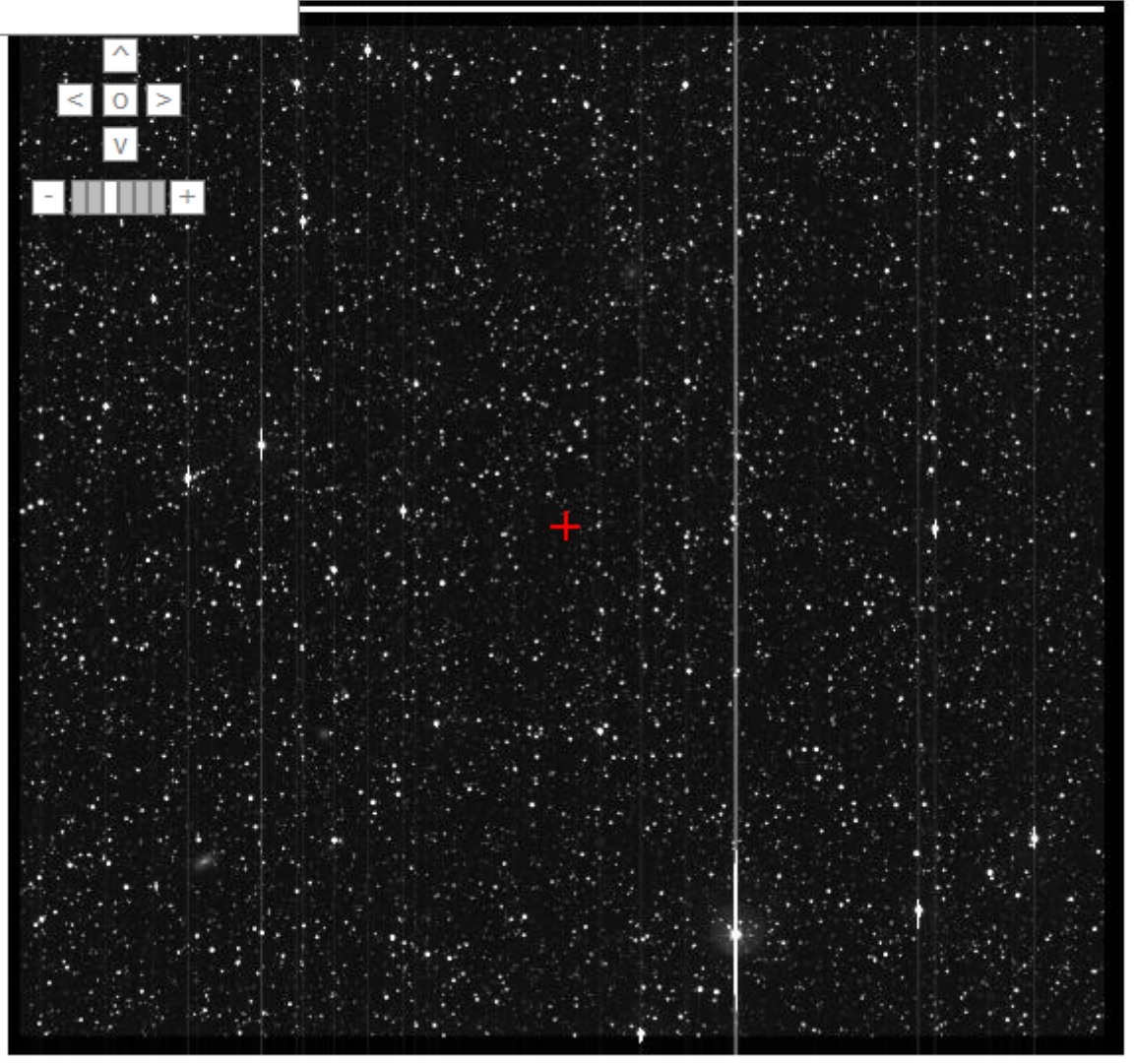
MAST
Users
Group
Meeting
Nov 26
2012

 **kplr2012179140901_ffi-uncert.fits[42]** Type 'L' for line plot
'C' for column plot 'S' to search
Click on sources   

[advanced contrast controls](#)

2MASS GALEX Kepler Targets Public Dropped Published

-69 884
19:17:16.882 +43:35:58.20





MAST
Users
Group
Meeting

Nov 26
2012

In the past year the archive has received:

- Updated light curves for Q0-Q8 (improved software)
- Q10-Q13 light curves, target pixel files and FFIs
- Co-trending Bias Vectors (CBV)
- Updated list of released Kepler Planetary Candidates (KOI)
- Data Release Notes and updated documentation
- ABC files (artifact, background and collateral files)



MAST
Users
Group
Meeting

Nov 26
2012

In progress or expected from 2011-2012

- Additional High Level Science Products - none delivered
- Kepler Colors Table - **operational, more colors coming**
- Interfaces for the SPICE Kernels (aka ephemeris), Ancillary Engineering Data and Reverse Clock data - **done**
- Pixel Response Function files and a CBV-like interface for retrieval - **done**
- Support for Kepler Senior Review Proposal - **done**
- Another CT - **done**
- Operations is moving from Solaris/SyBase to linux/sqlserver; expect to see improved performance. - **done, performance improved by factor of 2**
- Continued receipt of monthly and quarterly data transmissions, and quarterly KTCs - **done**
- Transfer of target pixel files to the KASC group - **done**



MAST
Users
Group
Meeting

Nov 26
2012

In progress or expected

- Kepler Colors Table - plan to add more colors as available
- Updated Q0-Q13 light curves to fix a Barycentric Time/leap second issue (March – May 2013).
- Coordinate with NexSci for delivery of Confirmed Planet information
- Continued receipt of monthly and quarterly data transmissions, and quarterly KTCs
- Transfer of target pixel files to the KASC group
- Additional High Level Science Products

Discussion Point

- Adding Kepler light curves to the MAST Portal
+ treat as a catalog or as an observation log?
> observation log results in more rows than the Portal can handle



MAST
Users
Group
Meeting

Nov 26
2012

Kepler Legacy Archive

We expect to be involved in the planning of the Kepler Legacy Archive.



MAST
Users
Group
Meeting

Nov 26
2012

Kepler Acronyms

- ASB – Archive Sciences Branch
- CBV – Co-trending Basis Vectors
- CT – Characteristics Table
- DPAS – Data Processing and Services
- DSB – Data Software Branch
- DMC – Data Management Center located at STScI
- KASC – Kepler Asteroseismic Science Consortium
- FFI – Full Frame Image
- IRT – UK IR Telescope survey – J
- KIC - Kepler Input Catalog
- KIS – Kepler Isaac Newton Telescope survey – U, g, r, I, H-alpha
- KTC - Kepler Target Catalog
- MOC - Mission Operations Center located at LASP in Boulder
- Q# - quarter, as in Q1 is Quarter 1
- RVC – Reverse Clock Cadence
- SOC – Science Operations Center located at NASA Ames
- TPF – Target Pixel File
- UBV – Everett et al survey – U, B, V